

Designing for users with dyslexia



Do...

Don't...

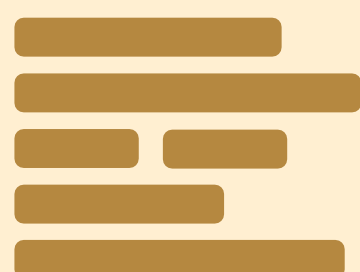
use images and diagrams to support text



use large blocks of heavy text



align text to the left and keep a consistent layout



underline words, use italics or write in capitals



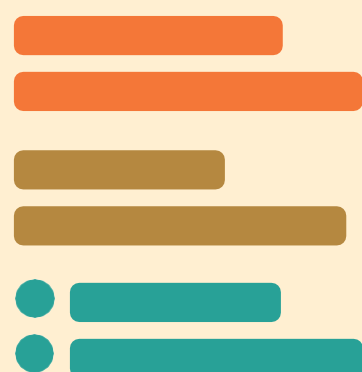
consider producing materials in other formats (for example audio or video)



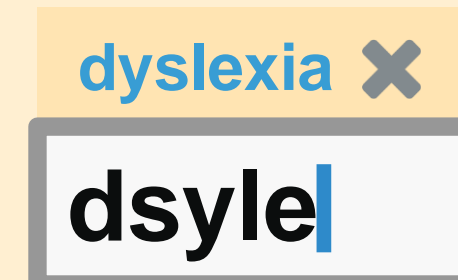
force users to remember things from previous pages - give reminders and prompts



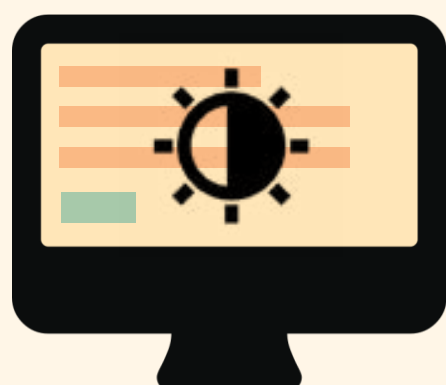
keep content short, clear and simple



rely on accurate spelling - use autocorrect or provide suggestions



let users change the contrast between background and text



put too much information in one place

