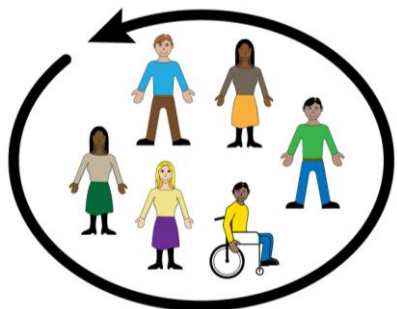
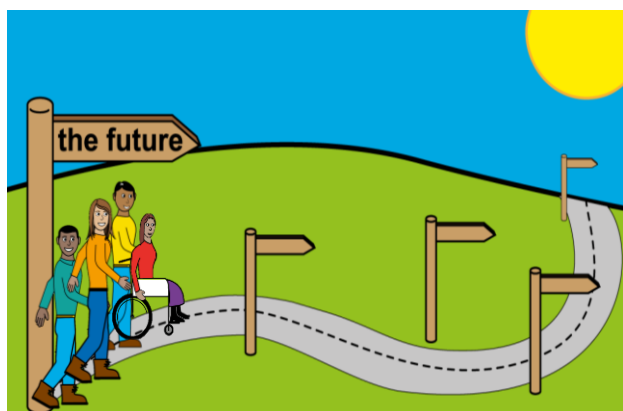




# Co-production Café

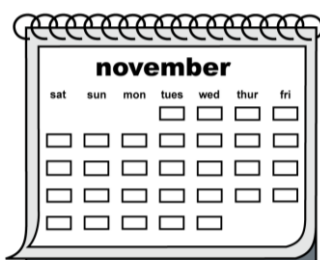


The Involvement Team would like to invite you to their next Co-production Café.



## Co-production Café plans

- Come along to share your ideas and help us plan the future of Co-production Cafes



**Wednesday 13<sup>th</sup> November**  
**1:00pm – 2:30pm**



**Room 2, Willow House**  
**St Mary's Hospital**  
**Armley LS12 3QE**



**Co-production Cafes are very popular.**  
**Please contact the Involvement Team to**  
**book a place if you want to come along.**



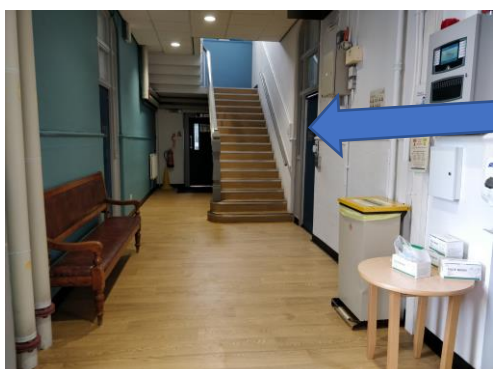
**0113 85 50530**



**[involve.lypft@nhs.net](mailto:involve.lypft@nhs.net)**



Willow House  
 St Mary's Hospital  
 Armley LS12 3QE



Room 2