

Involve

Newsletter of the
Learning Disabilities
Involvement Team

Summer 2024



Hello

Welcome to our latest newsletter.

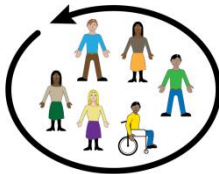
We have had a busy few months and are excited to share everything we have been working on.



What is in this newsletter?



projects we have been working on



information on how you can get involved

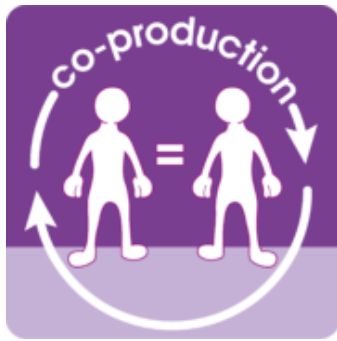


You can find the Involvement Office at

**4 Woodland Square
St Mary's Hospital
Armley, LS12 3QE**



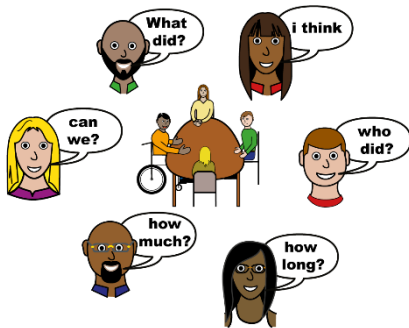
**0113 85 50530
involve.lypft@nhs.net**



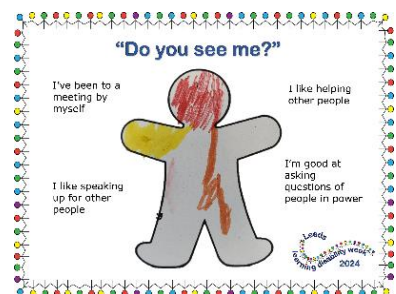
Co-production Cafes

We have had some lovely afternoons at our Co-production Cafes.

People have been sharing their experiences and inspiring other people.



People also shared all the amazing things they do.



The Co-production Cafes are very popular and very busy.

It is important for you to book a place if you want to join us.



Learning Disability Week

The week started with Picnic in the Park.



"We had fun at Temple Newsam park. I was helping out on our stall that we shared with the Health Facilitation Team. I talked about the work I do with the Involvement Team. I talked to lots of people who came up to see us.

Thank you to everyone who came."

Lisa



The theme of Learning Disability Week this year was '**Do you see me?**'

We asked people to write down all the amazing things that they do so they can be celebrated.



Learning Disability Week

The next event was the Council Chambers Takeover.

It was good that people with a learning disability got more chance to ask their questions to the panel this year.



I am very passionate about changing the times so that disabled people can travel on buses free before 9:30am. If the buses were free all the time in Leeds like they are in some other places in the country, it would break down more barriers. It would give people more opportunity to get employment and would help getting to medical appointments.



Learning Disability Week

On the Wednesday of Learning Disability Week, the Involvement Team hosted their own Coffee Morning.



We used the theme for the week – Do you see me?

We asked people to share the things that people with a learning disability bring to society.

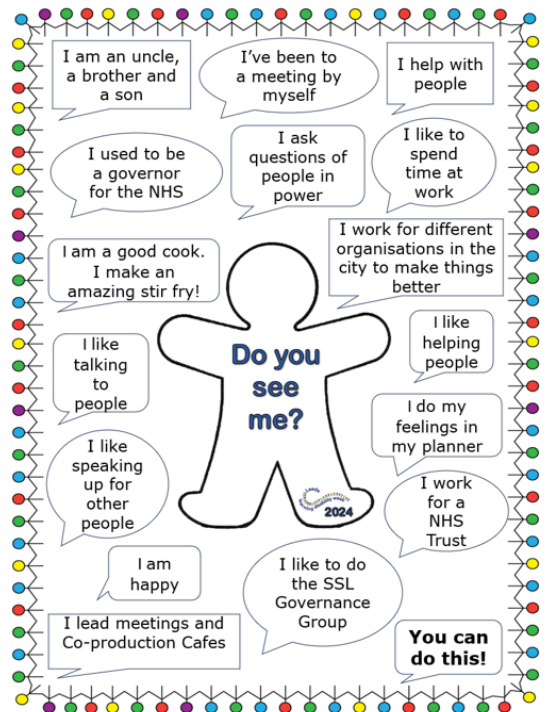
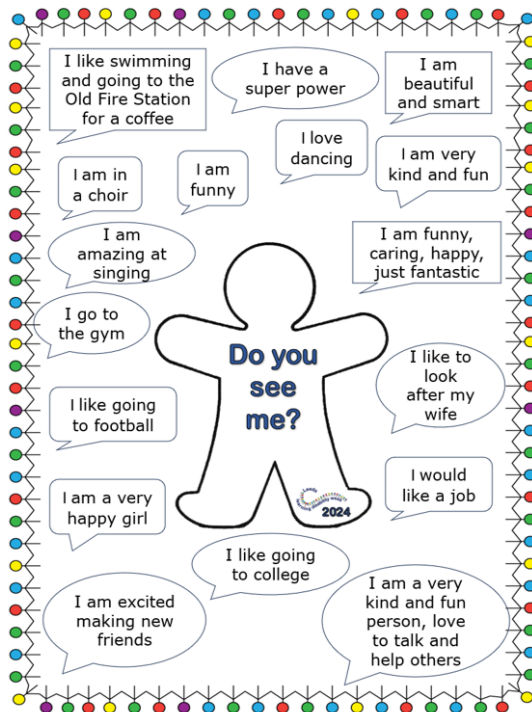
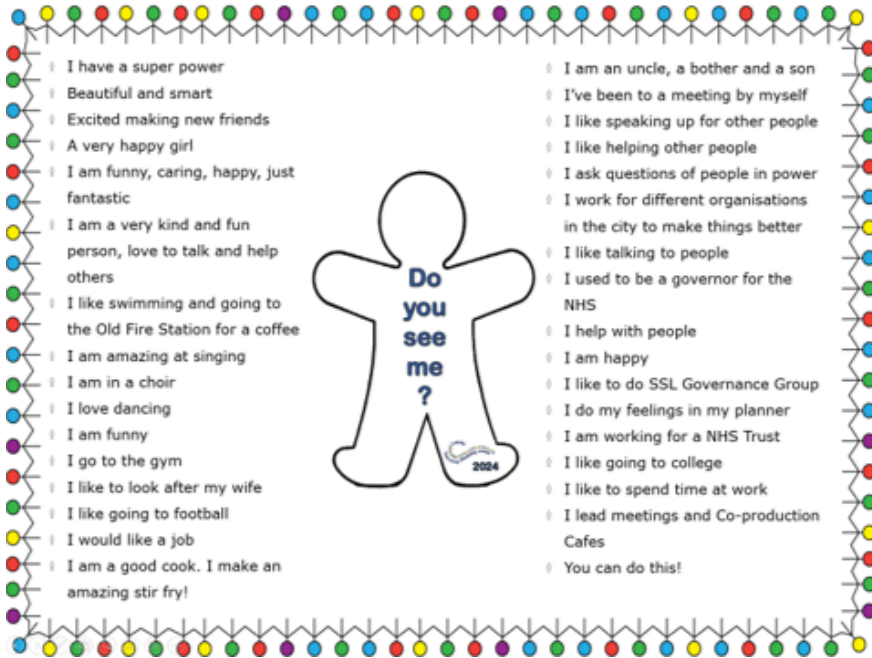


The Involvement Team will make a poster with all the things people have shared with us.

It was lovely to see some new faces.



Do you see me?

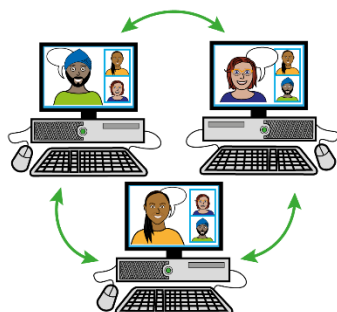


Yes we do!

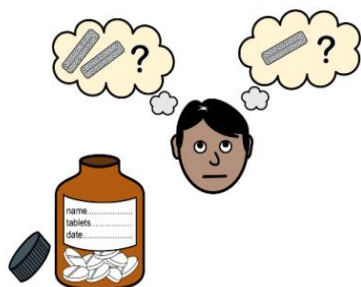


HSCQI Community Virtual Co-production Event

Shaun and Amy were invited to take part in an online co-production event in Northern Ireland.



The event was about telling the stories of people with lived experience and experiences of co-production to improve health and social care.



Shaun and Amy shared the work they had done on the Bigger Better Labels project.



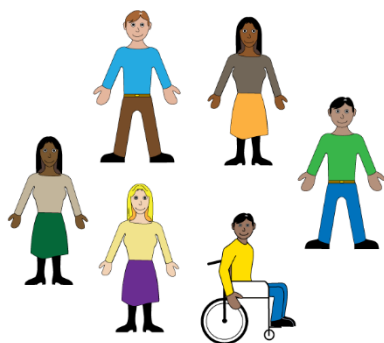
Shaun said: “I was very proud of the way Amy and myself were co-working together. It showed people that we were working as equals. It was the first time I had replied to the chat while doing an online presentation.”

More about the HSCQI Community Virtual Co-production Event

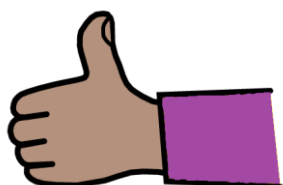


I felt very proud talking about my good and bad experiences of taking medication.

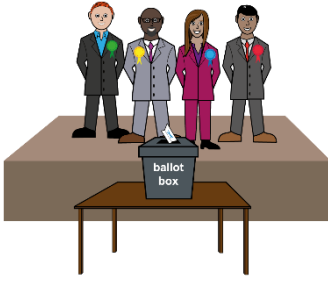
I feel that by being independent you take the power back.



I am not aiming my work just at people with learning disabilities, everyone can benefit from bigger, better labels: older people, young people, disabled people, autistic people and people from different countries – everyone really!



I feel like I am making a difference and changing attitudes.



Election Day!

Marie's experience

On Thursday 2nd May 2024 residents across the Leeds City Council area went to the polls to have their say on the West Yorkshire Combined Authority Mayoral election and who represents them at local council ...

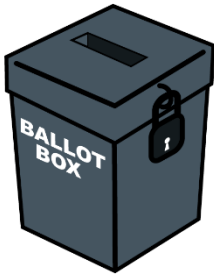
And that was also the day that Marie voted for the first time ever!

To help with this, we went through lots of Information with Marie to help her understand what it was all about. This included:

The reasons why we vote such as:

- To get better services in our local communities
- To make communities safer for people
- To keep communities clean





Election Day!

Marie's experience

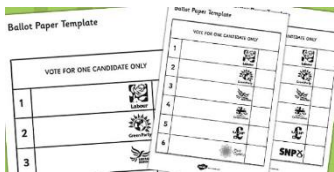
We looked at who the local candidates were and what they promised the local community of Armley.



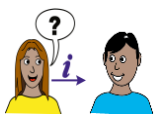
To make it easy for Marie to vote we made sure she understood the symbols for the different political parties and matched them up with the pictures of the candidates.

This meant that once she had made her choice, she could easily put X in the right box.

Marie thought it was great that she got the chance to do this and is looking forward to sending whoever wins the local election a strongly worded e mail. She wants them to know about the dropped curb at her home address that needs fixing and that we want more buses to help her get about easier!



**Go Marie ...
you're doing
amazing!**



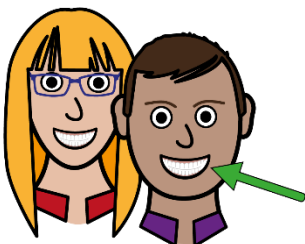
Sharing information and ideas – student placements



Danni joined us on a student placement.

Danni is in the second year of her Learning Disability Nurse and Social Worker course.

Danni had a split placement with the Involvement Team and the Community Mental Health Team.



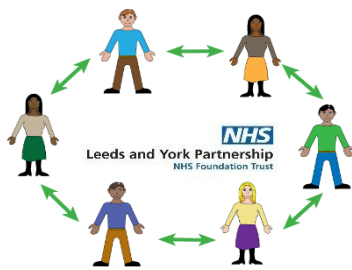
During her time with the Involvement Team, Danni had been doing some work around why oral health is important.



She spent some time at a Co-production Café learning about the problems that people with a learning disability have with their teeth and dentists.



Danni worked with Nasser to make some new easy on the i images. She used these to make some easy read information about looking after your teeth.



Improving Health and Lives Together: a celebration of our partnership work



The Involvement Team attended the
Leeds and York Partnership NHS
Foundation Trust annual general meeting.



Shaun was co-host of
the afternoon session
with Oliver Tipper,
Head of
Communications.



Oliver said “Many
thanks to Shaun for
being the Ant to my
Dec! I think we nailed
it.”

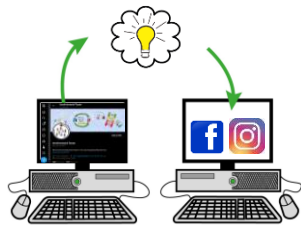


Shaun also gave a
presentation sharing
his lived experience.



Social media news

The Involvement Team has signed up to new social media accounts.



We joined twitter in December 2018. It was a very good way for us to share what we are doing with not just people and organisations in Leeds, but everywhere! It also let us see what else is happening and keep up to date with things.



@InvolveLYPFT

When twitter became X in 2023, we found out that some of the things it used to do no longer worked and that people preferred other social media sites.



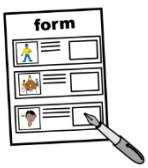
LYPFT Involve

We decided to continue to use X but also to add start facebook and Instagram accounts as these were the most popular platforms. We post the same information but it gives people more choice on where to find us.

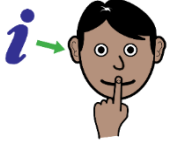


lypft_involve

Come and find us online!



Please fill in this form if you would you like to hear about our latest opportunities.

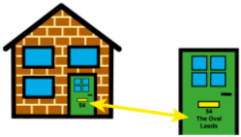


We will only use your details to tell you about our involvement work.

We will not share your details with anyone else.
We will file your information securely for a year.



Name:



Address:

.....



Phone:



email:

.....



Emergency contact:

.....

How would you prefer us to contact you?



letter

☐

phone

☐

email

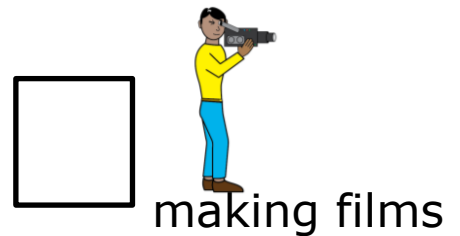
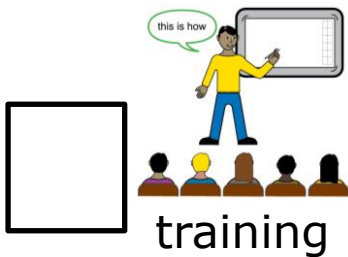
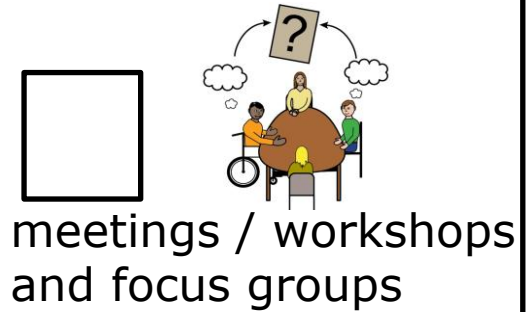
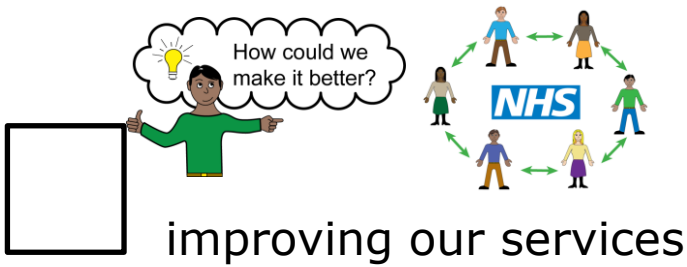
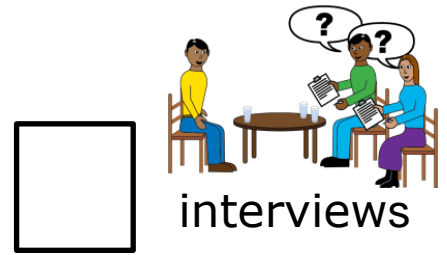
☐

text

☐

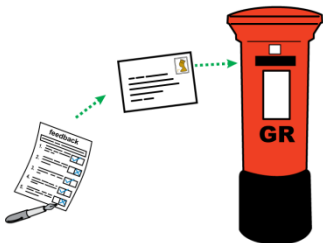
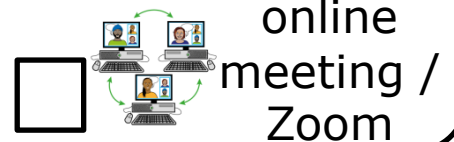
☐ Other (please tell us):

I am interested in (please tick):



How and when would you prefer to take part?

	Monday	Tuesday	Wednesday	Thursday	Friday
Morning					
Afternoon					



Please return this form to:

Involvement Team, 4 Woodland Square,
St Mary's Hospital, Armley LS12 3QE