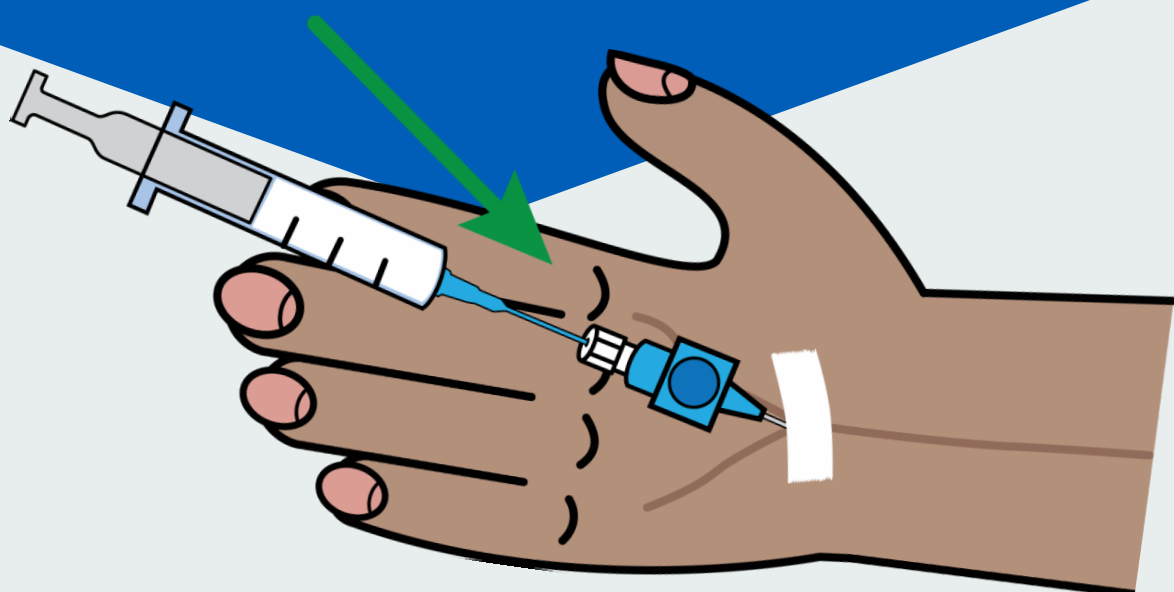
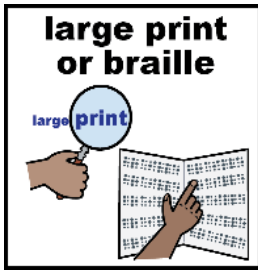


Easy Read

What is a cannula?

Information leaflet



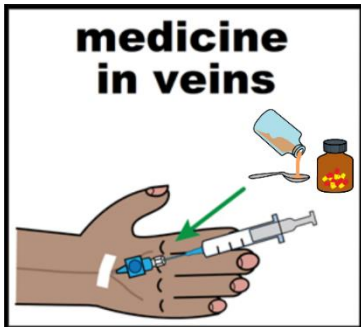


If you require this information in other languages, Braille, large print, or audio format please contact the service looking after you.

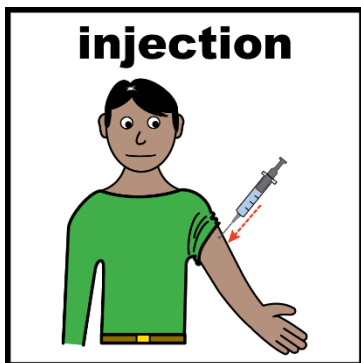


This booklet uses easy words and pictures.
You might want to ask someone to help you read it.

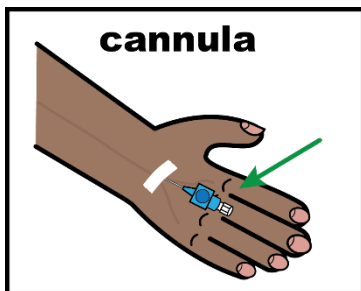
What is a cannula?



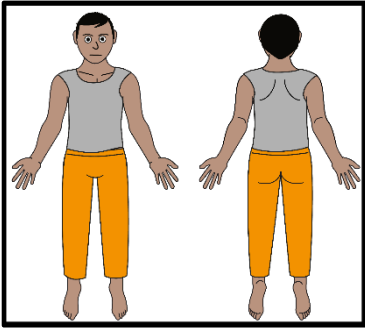
A cannula is a way to get medicine into your body.



It feels the same as having an injection.



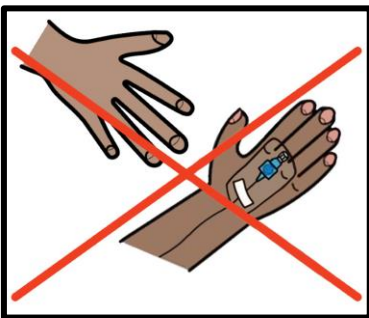
It is a small tube that goes into and stays in your hand.



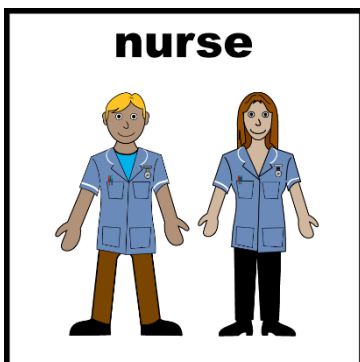
It might be in another part of your body too.
This is OK.



The nurse will put a dressing over the tube.



Do not touch the cannula or line.
Don't pull at the tube, it needs to stay in so you can have medicine through it.

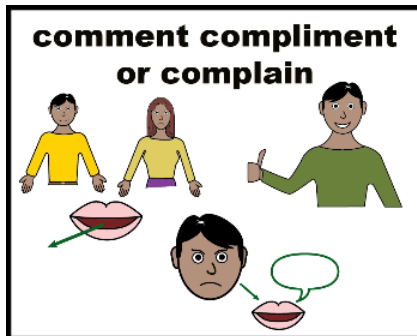


Your nurse will take the cannula out.



You can talk to your nurse about the cannula.

Other information...



If you want to give feedback to someone outside the service, you can speak to the **Patient Experience Team**.

Call 0113 220 8585

Email lch.pet@nhs.net



We might ask you a few questions and keep a record of your personal details.

We may share your information with other services. We will ask you before we do this, as per the Data Protection Act 1998.