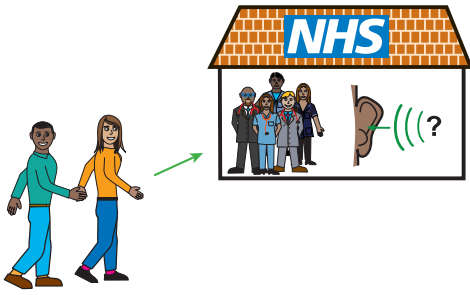


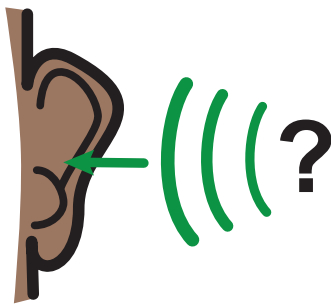
# Shoebox Audiometer test



# Audiometer test



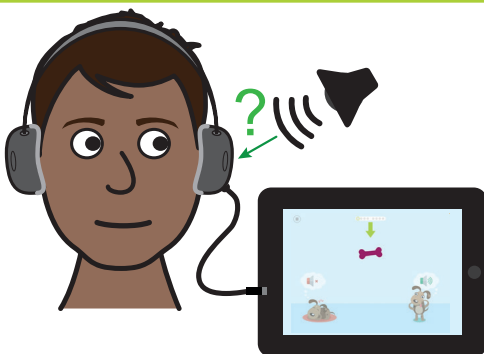
When you visit Audiology you may be asked to do a different type of hearing test.



This hearing test is called the 'Shoebbox Audiometer Test'

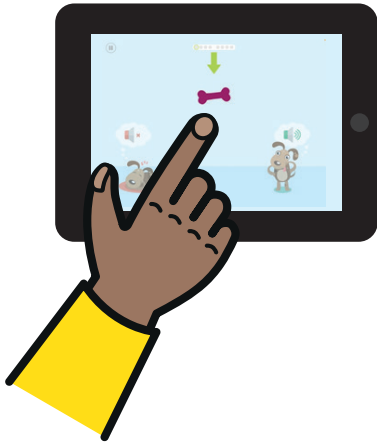


This test is on an ipad.

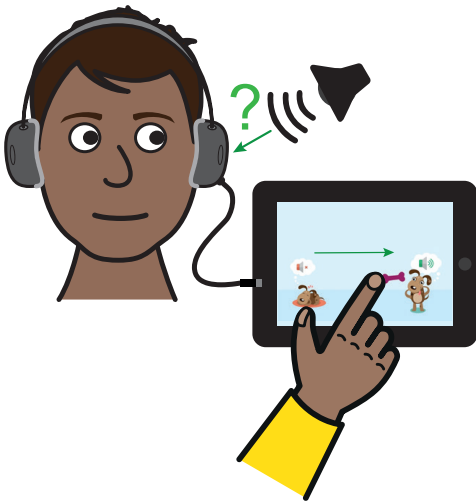


This test is picture of a bone and 2 dogs.

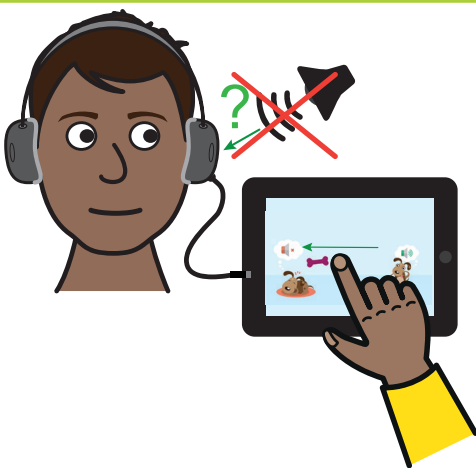
One is awake and one is sleeping.



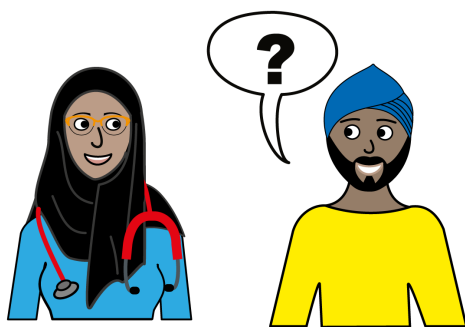
You will be asked to put your finger on the bone. This will make a noise.



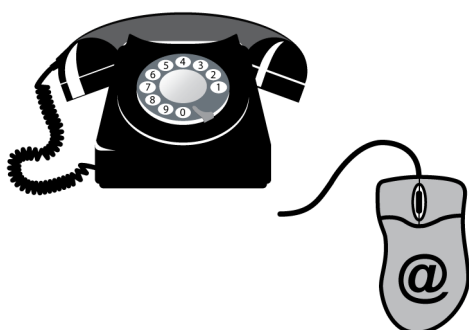
If you can hear a noise you need to move the bone to the dog which is awake.



If you don't hear the noise then you move the bone to the dog which is sleeping



If you have any questions then you can ask the Audiology team.



You can call on **0113 3926300**

You can email on

[leedsth-tr.hearingandbalance@nhs.net](mailto:leedsth-tr.hearingandbalance@nhs.net)