

Learning Disability  
Services

# The Assessment and Referral Team (ART)





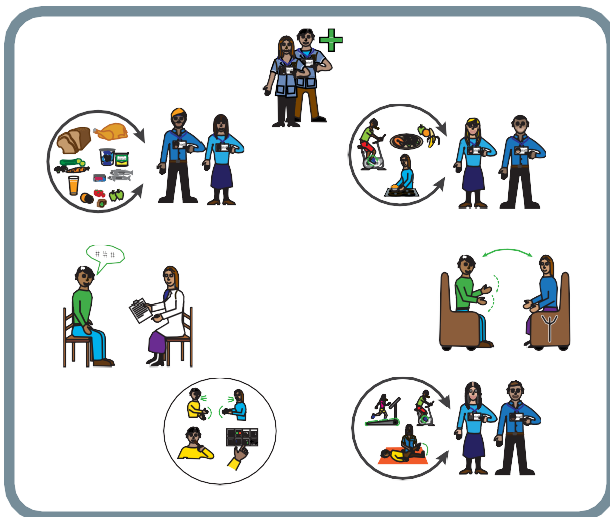
The Community Learning Disability Teams (CLDTs) provide specialist health services for adults aged 18 and over with a learning disability and complex health needs.

There are 2 CLDT teams in Leeds:

- The West and South team based at Willow House, St Mary's Hospital in Armley.
- The East North East team based at Asket Croft in Seacroft.

<https://www.learningdisabilityservice-leeds.nhs.uk/wp-content/uploads/2021/07/Community-Learning-LD-A4-Leaflet-2021.pdf>

Each team comprises of the following professions:



- Community Nursing
- Dietitians
- Occupational Therapy
- Physiotherapy
- Psychiatry
- Psychology
- Speech and Language Therapy



The Assessment and Referral Team (ART) triage all referrals for the CLDTs. The referrals are matched against the CLDT eligibility criteria.

We only offer a Learning Disability assessment if there is some evidence that the person has a learning disability and a health need that cannot be met by another service in the community.

If you do not have formal diagnostic evidence of a learning disability then you must complete an inclusion tool prior to making the referral.

Referrals that do not meet the criteria will be offered signposting information if available.

<https://www.learningdisabilityservice-leeds.nhs.uk/wp-content/uploads/2020/07/Inclusion-tool-Jan-2019-3.pdf>



CLDT criteria:

- Aged 18 years and over.
- Registered with a Leeds GP.
- Have a diagnosed Learning Disability, or an IQ under 70.
- Have a health need that cannot be met in a mainstream service despite reasonable adjustments being made.

<https://www.learningdisabilityservice-leeds.nhs.uk/wp-content/uploads/2020/07/improving-identification-of-people-with-a-learning-disability-guidance-for-general-practice-1.pdf>

Referrals can be considered for people aged 17 ½ who are transitioning into adult services from CAMHS or who have complex physical health needs transitioning from children’s to adult services.

Learning Disability assessments are only completed for people who meet both criteria below:



- The person has a health need that CLDT would provide a service for, and
- There is significant evidence to suspect the person has a learning disability but does not have a formal diagnosis.

Learning Disability assessments will not be completed for people who are already open to another team within LYPFT. Those people should contact their care coordinator to discuss further.



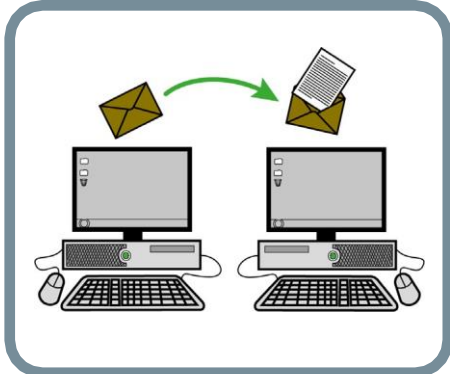
- Complete the referral form **IN FULL** with relevant information to support the referral, including which professional you would like to see and why.
- Email or post the completed referral form to SPA (Single Point of Access). Contact details overleaf.
- A clinician from the ART team will contact the referrer or the person if further information is needed to triage the referral.
- All referrals are discussed in referrals meeting and transferred to the CLDT if they meet the criteria.

If the referral does not meet CLDT criteria, ART will aim to signpost to appropriate services who could meet the person’s needs.

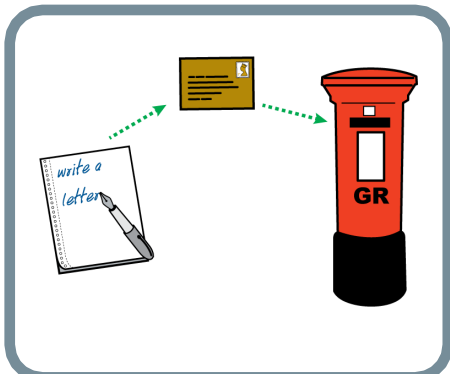


Leeds and York Partnership NHS Foundation Trust  
[www.leedsandyorkpft.nhs.uk](http://www.leedsandyorkpft.nhs.uk)

The referral form can be downloaded from:  
[www.leedsandyorkpft.nhs.uk/our-services/community-learning-disability-teams-cltd/](http://www.leedsandyorkpft.nhs.uk/our-services/community-learning-disability-teams-cltd/)



When the referral is complete please email to:  
[referral.lypft@nhs.net](mailto:referral.lypft@nhs.net)

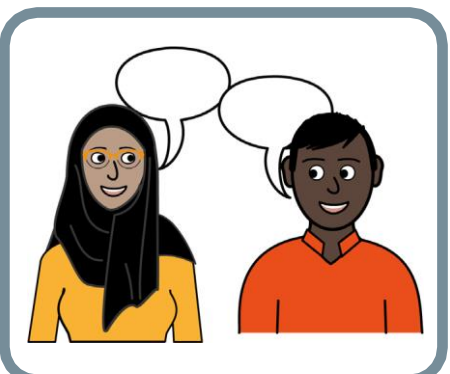


Or post to:  
Referral Administrator  
LYPFT NHS Trust  
Becklin Centre  
Alma Street  
Leeds LS9 7BE



**phone**

Single Point of Access: 0800 183 1485



If you are planning to make a referral and would like to discuss this prior to placing the referral please contact the ART team for a discussion. If we are unavailable, please leave a voice message and we will get back to you.

Assessment and Referral Team  
St Mary's Hospital  
Ventures, 4 Woodland Square  
Green Hill Road  
Leeds LS12 3QE

Telephone: 0113 85 55012

Review date: June 2022