

Learning Disability  
Services

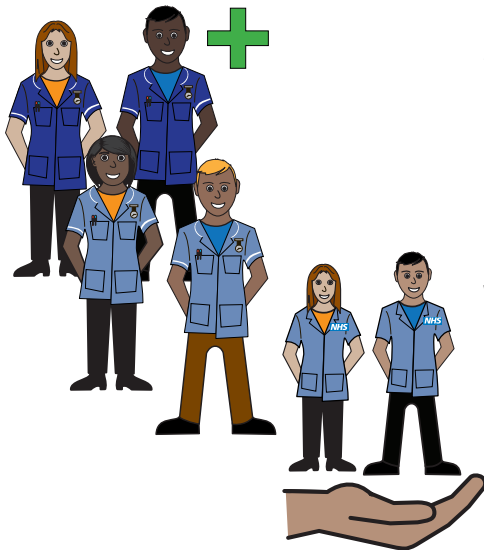
# 2 Woodland Square

Specialist Complex Multiple Impairment  
Planned Respite.



2 Woodland Square,  
St Mary's Hospital,  
Greenhill Road, Leeds, LS12 3QE

## Who are we?



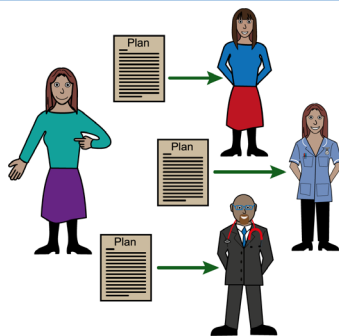
2 Woodland square provide planned health respite for individuals whose complex health needs mean they cannot be supported in social care.

We are a team of learning disability nurses, adult nurses and support workers. We have an activity coordinator to support with therapeutic activity.

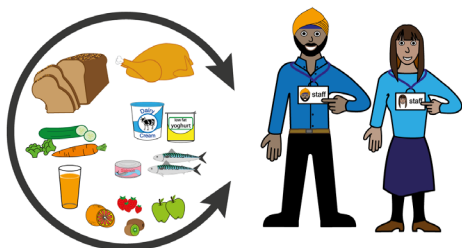
## What we do and how we can support you?



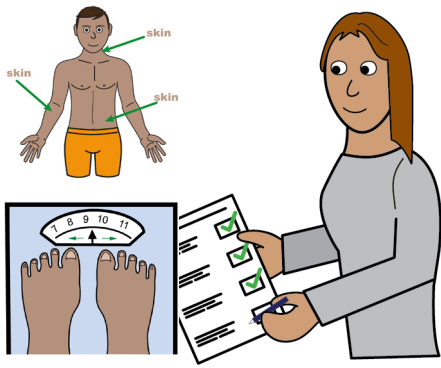
The team provide support to service users and their carers who require planned respite.



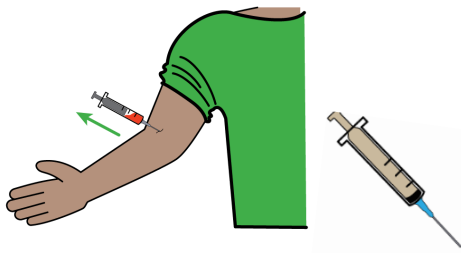
The team support the CLDT and primary health care services to meet the health needs of our service users incorporating all reasonable adjustments required.



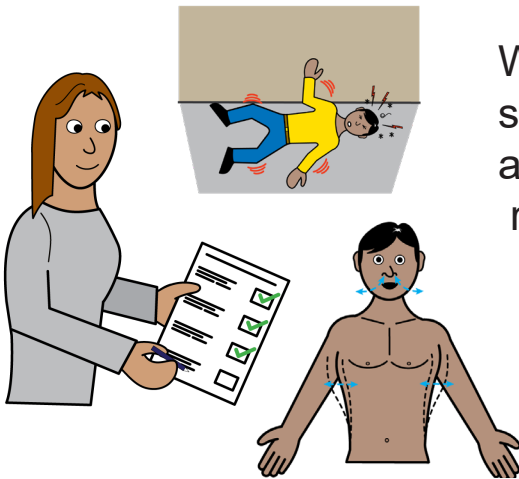
We work closely with dieticians for all aspects of oral and enteral feeding and care.



At 2 Woodland Square routine health monitoring is carried out for example weight, skin integrity and physical observations



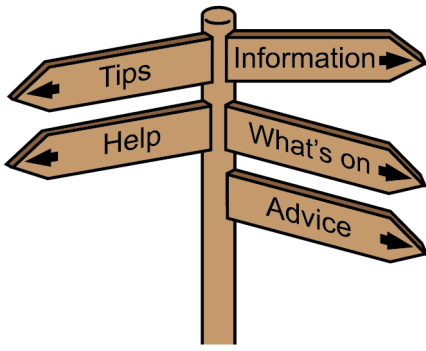
The team can help complete physical health interventions such as blood tests, vaccinations, and wound care.



We can monitor changes to physical health such as seizure activity, continence, wounds, and respiratory health, and liaise with the relevant professionals.



The team can support with transitions to other services such as supported living and day services.



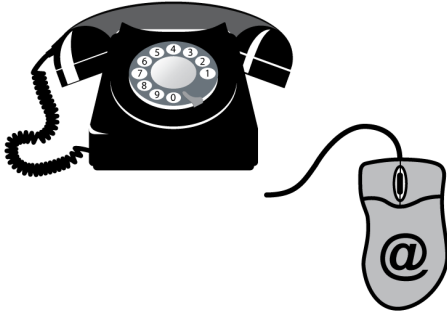
We can provide a point of contact for our carers and signpost to other services when required.



## Referrals

Referrals need to be made via adult social care and are discussed at city wide respite panel to ensure that the service user attends the correct respite service for them.

Adult Social Care: 0113 222 4401



## Email

[lmh-tr.2WoodlandSquare@nhs.net](mailto:lmh-tr.2WoodlandSquare@nhs.net)

Tel: 0113 85 55009/7