



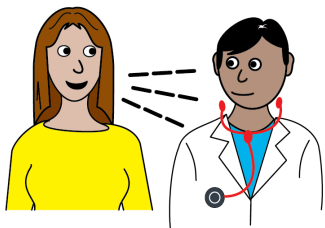
Leeds Learning Disability Health Facilitation Team RESTORE2 mini and Pulse Oximetry Pilot Scheme.



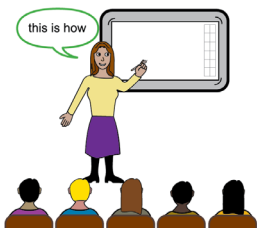
We want to make sure you get the care you need at the right time.



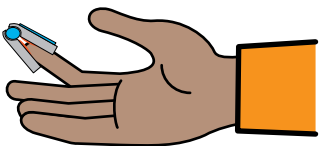
It can be hard to know when people are poorly.



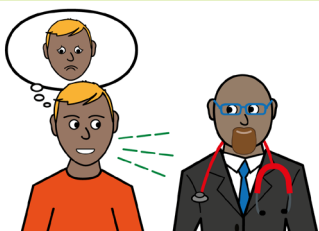
People get better more quickly if they get medical help early.



RESTORE2 mini trains carers to record early signs of serious illness.



Pulse Oximeters help to measure how poorly people are.
It is easy to do.



Training will help carers tell medical people when they are worried.

This will help you get the right treatment at the right time.