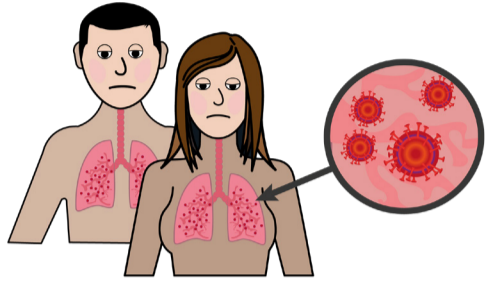


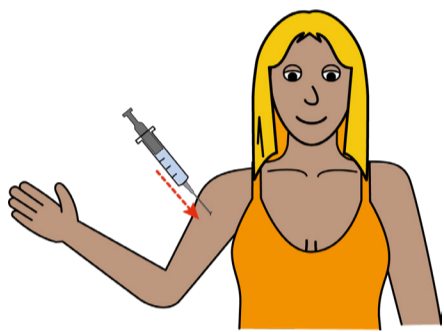


# Coronavirus Vaccination

## Information for Staff and Carers



People with a learning disability are now entitled to have a Coronavirus vaccination.



Please read this leaflet to find out what is expected of you to support the person with a learning disability to have their vaccination.



If you are having a home visit the Health Professional cannot give you the vaccine unless you are **Coronavirus free for 28 days** before your vaccination date.

Please inform the practice as soon as possible if there is a positive case in your home.

The practice can then rebook the appointment when it is safe to do so.



If the Health Professional is undertaking a home visit for more than one patient they may need a **dedicated space** for each patient to be brought to so they can have their vaccination. It is not possible for the Health Professional to travel around the home to vaccinate patients.



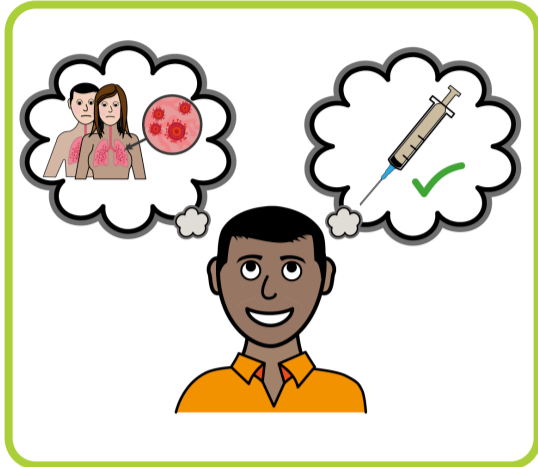
You need to tell the Health Professional if the patient has ever had a serious allergic reaction (Anaphylaxis) or uses an Epi pen.

They are not allowed to have the vaccine because of potential reactions.



When you are making an appointment please make them aware of any reasonable adjustment that the patient may need.

[www.learningdisabilityservice-leeds.nhs.uk/get-checked-out/resources/gps-and-practice-staff/](http://www.learningdisabilityservice-leeds.nhs.uk/get-checked-out/resources/gps-and-practice-staff/)



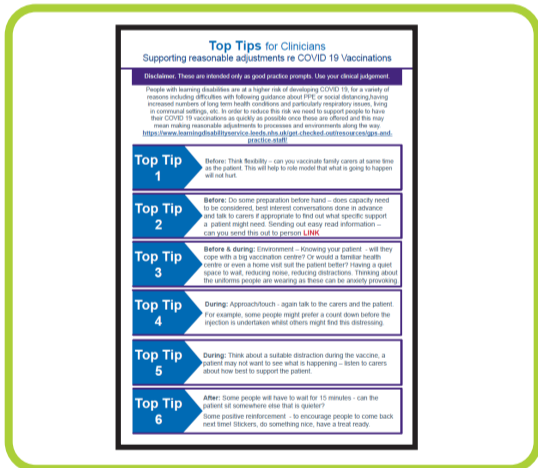
You need to prepare the patient so that they understand what the vaccination is for, why it is needed and what the side effects could be.

Use the easy read materials provided to help them make their own decision about having the vaccination.

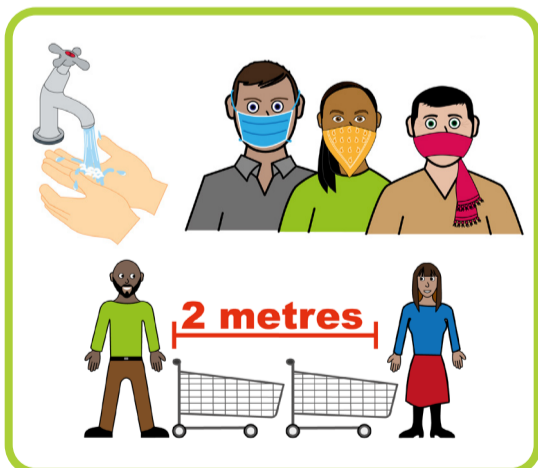


Think about the clothing on the day of the vaccination.

Make sure the top of the arm is accessible.



Look at the **Top Tips** document included in this pack.



Remember to keep following the **Government** guidance after the vaccination.

**Hands      Face      Space**